



RESIDENTIAL ESTATE AGENTS
PROPERTY LETTING & MANAGING AGENTS
VALUERS & PROPERTY CONSULTANTS
CHARTERED SURVEYORS

01722 336422
www.hwwhite.co.uk WEB



Stonehenge Walk, Amesbury

£875 PCM

2 Stonehenge Walk, Amesbury, Salisbury, Wiltshire, SP4 7DB



Energy Efficiency Rating		
	Current	Potential
Very energy efficient - lower running costs		
(92 plus) A		
(81-91) B	83	85
(69-80) C		
(55-68) D		
(39-54) E		
(21-38) F		
(1-20) G		
Not energy efficient - higher running costs		
England & Wales		EU Directive 2002/91/EC

Description

Accommodation comprises: Entrance Hall, Lounge/Dining Room, kitchen with electric oven and hob, two double bedrooms and a bathroom with shower over the bath. One allocated parking space to the rear. The property benefits from double glazing and electric heating.

A Note From the Whites Letting Team

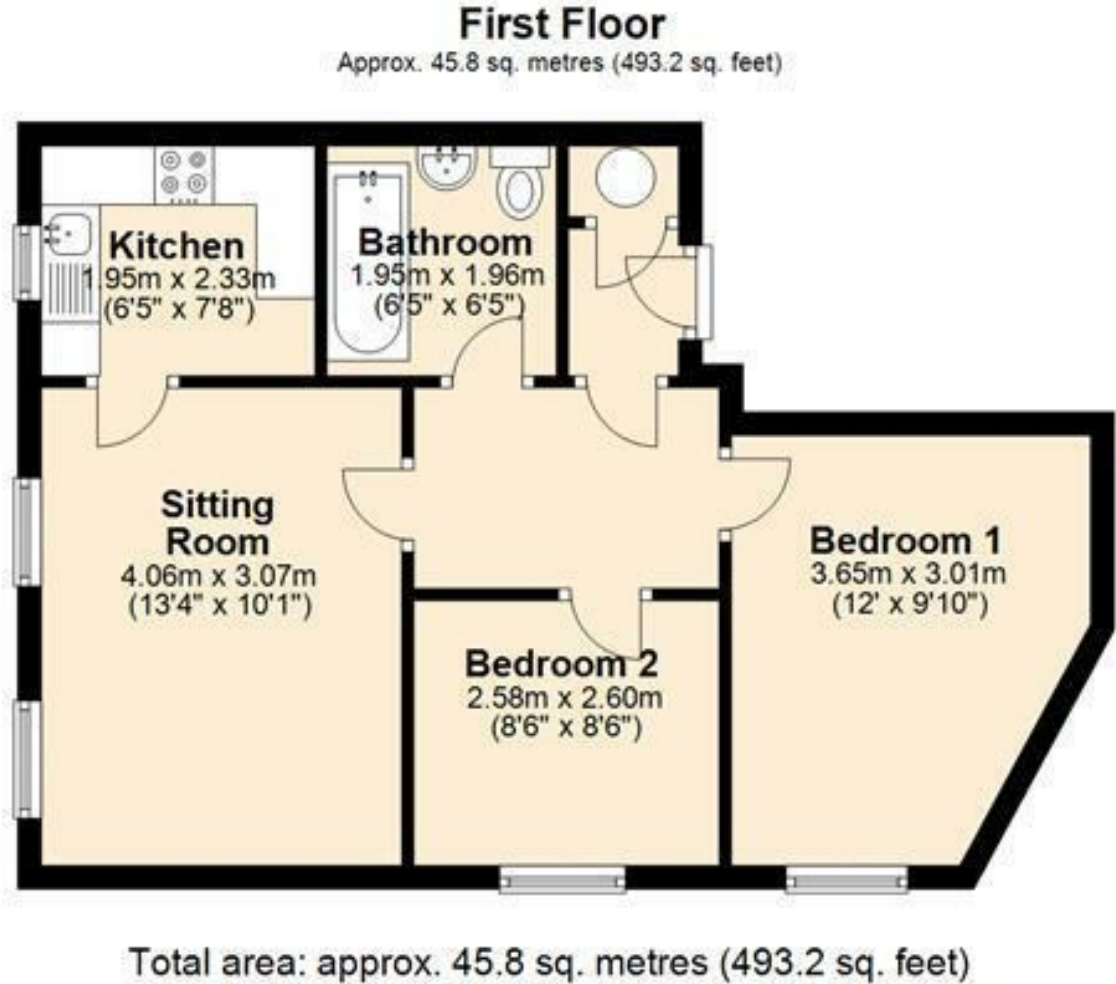
Thank you for considering Whites as your letting agent. As a proud member of the Royal Institution of Chartered Surveyors (RICS), we aspire to uphold its core values by providing a fair, efficient, and transparent service for all prospective tenants. Below we've outlined how we manage property enquiries and applications to help set expectations and guide you through the letting application process.

To begin the process of enquiring about one of our properties, please click the 'Request Further Details/Info' button on the property listing. This will send us your contact information, and we'll get back to you as soon as possible with a short questionnaire to complete. Once we've received your completed questionnaire, your enquiry will be registered with the relevant Property Manager. Please note, only those who complete this step will be considered as having formally enquired about the property.

Due to the high level of interest we often receive, we regret that we aren't often able to offer everyone a viewing. Where possible, we handle enquiries in the order they are received expectat

Please r
on its m

The ava



01722 336422

47 Castle Street, Salisbury SP1 3SP 01722 320600 FAX
residential-sales@hwwhite.co.uk E-MAIL www.hwwhite.co.uk WEB